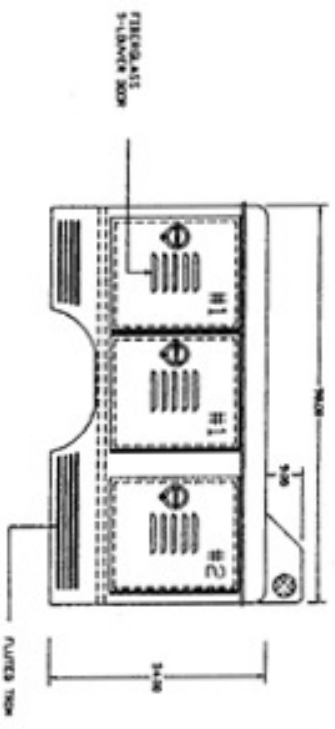
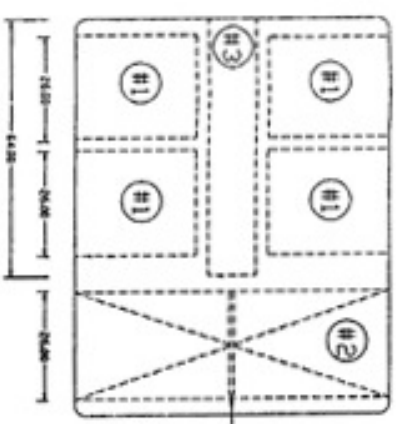


- COMPARTMENT SIZES:**
- #1 26" WIDE X 30" HIGH X 32" DEEP.
  - #2 26" WIDE X 30" HIGH X THRU-BODY
  - #3 12" WIDE X 30" HIGH X 64" DEEP.

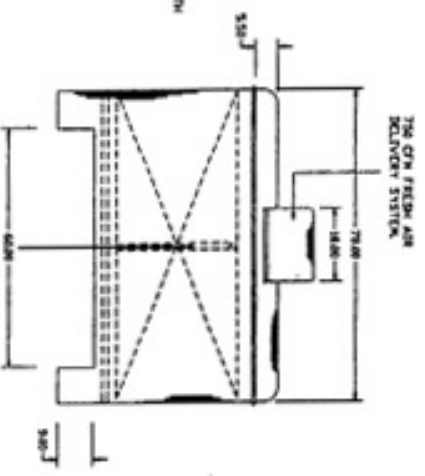
**RIGHT SIDE COMPARTMENTS**



**FLOOR PLAN**



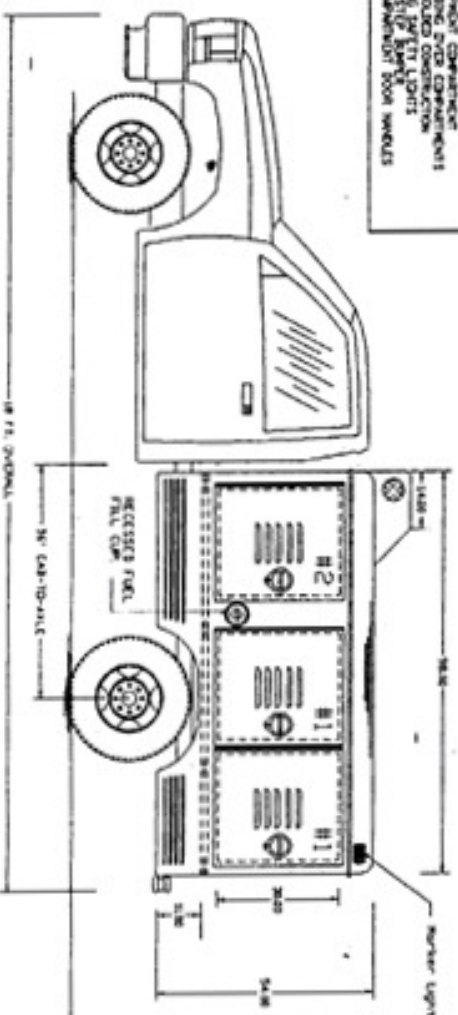
**FRONT BODY**



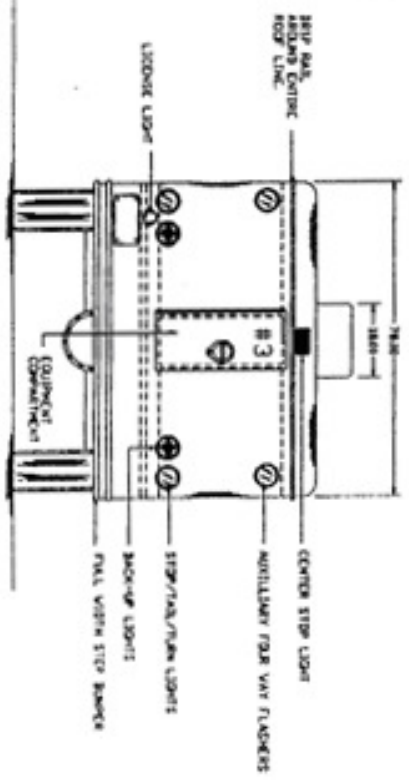
TOTAL BODY WEIGHT LESS OPTIONS - 800 LBS.

**STANDARD FEATURES:**

THE GM AIR SOLIDIFY SYSTEM PROVIDES GREAT STRENGTH AND DURABILITY FOR INSIDE AND OUTSIDE COMPARTMENTS. BUILT USING MOLDED POLYURETHANE FOAM INSULATION, MOLDED CONSTRUCTION FROM VARYING FLUTED POLYURETHANE FOAM WITH STIFF BENCH, FIBERGLASS 1-LAYER BODY, AND COMPARTMENT BODY WHEELS.



**REAR BODY**



Swab Wagon Company, Inc.

SWAB MODEL ARF-95 ANIMAL RESCUE UNIT.

SCALE 1 = 32