



**Commonly Selected Options**  
**SWAB Pioneer ALSF-96**  
**Fiberglass Utility Body and Conversion**



# Commonly Selected Optional Equipment

*The SWAB Pioneer Series fiberglass utility body is a very versatile unit, capable of meeting the demands of an organization for any application. Listed below are the most commonly requested options, however, should your organization have other needs, please contact your representative or SWAB Wagon Company, Inc. We will gladly listen to your ideas and develop the solutions for your situations. Warning lights and/or equipment not limited to items specified below, other warning light/equipment manufacturers and models are available.*

## CHASSIS MODIFICATIONS & EQUIPMENT

### GRILL GUARD

One (1) Westin Sportsman Grill Guard installed per manufacturer's installation instructions. Grill Guard to have a polished stainless steel finish.



### WINCH MOUNT GRILL GUARD

One (1) Warn Trans4mer polished stainless steel grille guard assembly. Grille guard to include polished stainless steel headlight brush guards, and polished stainless steel winch mounting plate.



### PERMANENT MOUNT WINCH

One (1) Warn M12000 permanent mount winch installed in the Trans4mer brush guard. Winch to have a 12,000lb pulling capacity. Winch to include 125' of 3/8" wire rope, roller fairlead, and extended remote controller.



### TUBULAR CAB STEPS

One (1) pair of Westin Platinum 4" Oval Nerf Bars. Nerf Bars will come in a polished stainless steel finish.

### NFPA COMPLIANT CAB STEPS

One (1) pair of running boards fabricated and installed onto chassis. Running boards are to be fabricated from NFPA approved embossed treadplate, with a grip insert in line with each cab door for maximum traction. Final dimensions and design to be determined once chassis is delivered.

# PIONEER BODY MODIFICATIONS & EQUIPMENT

## SLAM-SHUT LATCHES WITH PADDLE STYLE HANDLES

Doors equipped with key-locking paddle exterior handles, polished stainless steel and keyed alike. Doors are to be secured by a cam lock and striker system using spring loaded slam-shut latches.

**\*Will replace the D-Ring handle and three (3) point locking system in the Compartment Door Section.**

## DOOR RETAINERS

All body side doors equipped with Cleveland double-spring cadmium-plated retainers to hold doors at 90-degrees to body side when open. Rear compartment door to have nylon strap door retainer installed with two (2) footman's loops if the body is equipped with a rear facing compartment.



## ADJUSTABLE COMPARTMENT SHELVING

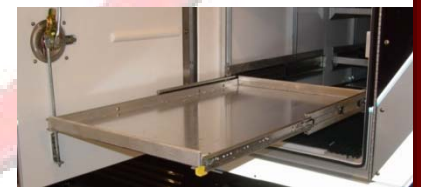
One (1) adjustable shelf installed in customer specified side compartment. Adjustable shelf to have 1" double break lip on front and back edge, left and right edge to be 1" single break lip. Shelves are to be installed on Kindorf "C" type aluminum side wall "shelf track" and have 1 1/4" x 3/16" full depth side brackets with end gussets. Kindorf rail clips and fasteners provided for each bracket.



TOTAL QUANTITY: \_\_\_\_\_ LOCATIONS: L1 \_\_\_\_\_ L2 \_\_\_\_\_ L3 \_\_\_\_\_ R1 \_\_\_\_\_ R2 \_\_\_\_\_ R3 \_\_\_\_\_

## SLIDE-OUT TRAY

One (1) slide-out tray installed in customer specified compartment. Tray and slides installed on adjustable shelf track. Tray to have 1" double break lip on front and back edge, left and right edge to be 1" single break lip. Two (2) heavy-duty ball-bearing slides installed, one (1) with hold-open mechanism. Slides have a 300lb maximum capacity.



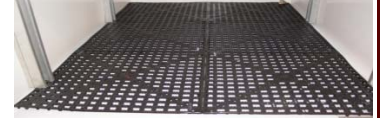
TOTAL QUANTITY: \_\_\_\_\_ LOCATIONS: L1 \_\_\_\_\_ L2 \_\_\_\_\_ L3 \_\_\_\_\_ R1 \_\_\_\_\_ R2 \_\_\_\_\_ R3 \_\_\_\_\_

## DUAL DIRECTIONAL SLIDE-OUT TRAY

One (1) Innovative Slide-Master M2D-72-22 dual directional slide out tray installed on an aluminum angle mounted as low as possible on Kindorf track. Tray to be constructed of .125 Aluminum and to be maximum allowable size to fit in compartment. Tray to have no less than 1" single break lip on all four sides.

**\*REQUIRES TRANSVERSE COMPARTMENT**

## **DRI-DEK FOR ADJUSTABLE SHELVING AND SLIDE-OUT TRAYS**



Heavy poly vinyl tiles installed on adjustable shelf/slide-out tray to provide dry/skid free decking. Dri-Dek is standard on body side compartment floors and will be the same color as the standard color chosen above.

## **PHARMACEUTICAL LOCK BOX**

One (1) pharmaceutical lock box fabricated from .125 aluminum with stainless steel piano hinge and locking 6" D-handle latch. Lock box securely bolted to shelf track with a minimum of four (4) bolts. Lock box designed to be mounted in any compartment with existing shelf track. Lock box standard size is approximately 12" wide X 12" high X 22" deep. Custom sizes are available.



## **BACKBOARD COMPARTMENT DIVIDER/RETAINER**

Backboard divider installed in backboard compartment capable of securely retaining customer supplied backboards/stokes basket. Divider is to be fabricated from .063 aluminum and 1/2" CDX plywood. Velcro strap installed to secure board(s) and/or stokes basket within compartment. The compartment layout is to be approved prior to the start of fabrication.



## **OXYGEN BOTTLE STORAGE RACK**

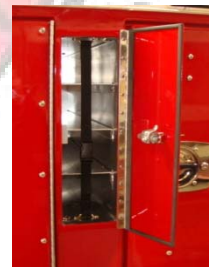
One (1) Oxygen bottle storage rack capable of storing two (2) "E" or two (2) "D" oxygen bottles (or 1 of each) up to 5 1/4" diameter. Fabricated from .100 aluminum and installed in customer specified compartment. Bottle rack is designed to be mounted in any compartment with existing shelf track.



**TOTAL QUANTITY:** \_\_\_\_\_ **LOCATIONS:** L1 \_\_\_\_\_ L2 \_\_\_\_\_ L3 \_\_\_\_\_ R1 \_\_\_\_\_ R2 \_\_\_\_\_ R3 \_\_\_\_\_

## **OXYGEN BOTTLE STORAGE CABINET**

One (1) bottle storage rack capable of storing four (4) "standard E" size oxygen cylinders. Fabricated of .125 aluminum and installed between compartments R1 and R2 with external body access door.



## **COMMAND DESK**

One (1) slide out command desk fabricated from aluminum with clear plexiglass hinged overlay. Desk top is to be angled toward front with a storage area below. Desk mounted on slides and vertical adjustment track. Desk dimensions are approximately 23" wide, 2" height in front - 4" height in rear and a depth of 24".



## **FIRE EXTINGUISHER BRACKET**

One (1) fire extinguisher bracket for customer supplied/specified fire extinguisher fabricated and installed on existing adjustable shelf track. Bracket secured to track with two (2) track nuts and bolts. Fire extinguishers are available upon request.

**TOTAL QUANTITY:** \_\_\_\_\_ **LOCATIONS:** L1 \_\_\_\_\_ L2 \_\_\_\_\_ L3 \_\_\_\_\_ R1 \_\_\_\_\_ R2 \_\_\_\_\_ R3 \_\_\_\_\_

## **WHEELHOUSING FENDERETTE**

Cast Products Model C1185-3 polished aluminum fenderette installed, with concealed hardware, on body at rear wheel body cut-outs.



## **STOKES BASKET STORAGE RACK, ROOF MOUNTED**

One (1) roof mounted storage rack for customer supplied stokes basket. Aluminum rails installed on roof to guide stokes basket into protective hood. U-shaped brackets with quick-release pins installed at rear of body to secure basket to roof. Front protective hood detachable from roof for access to service panel. Storage rack painted to match body and/or roof color.



*Since 1868*

*Wagon Co.*

# 12VDC ELECTRICAL EQUIPMENT - UTILITY

## EMERGENCY SERVICES PACKAGE

**\*PACKAGE IS REQUIRED IF ADDING ANY ADDITIONAL ELECTRICAL EQUIPMENT TO UNIT.**

**Cab Center Console** -- One (1) Zolatone Covered, floor-mounted/ between-seat switch console installed with switch panel and rearward open map/book area. Console to be constructed of 1/2" industrial-grade plywood and .125" aluminum with lid constructed of 1/2" black plastic. Console and lid color to be Black unless otherwise requested. Console to include lighted type rocker switches with back-lite labels for all specified 12VDC loads. **\*Console dimensions and lid layout to be finalized by customer by the time the body has been painted and mounted in order to prevent any delays in construction.**

**Ventilated Electrical Enclosure** -- One (1) ventilated enclosure to house all 12-volt relays, circuit breakers, and power supplies constructed and installed in compartment R-1 (unless otherwise specified). Each component identified by number/color and function and listed within control panel. Main service cable shall be 1/0 stranded insulated cable, rated to 210 amps continuous service and protected by a 200 amp automatic reset circuit breaker. Enclosure to provide for ease of transfer of body/equipment to new chassis.

**Battery Switch** -- One (1) Transportation Safety Devices CDR-357 automatic battery switch mounted in enclosure and connected to chassis batteries and 12VDC system. Automatic switch interfaced with chassis ignition system. Switch to engage/disengage conversion utilities only. Chassis electrical system to remain unaltered. Automatic switch to disengage conversions utilities through internal timer after ignition has been turned off.

## COMPARTMENT LIGHTING

One (1) 4" round LED compartment light recessed in each compartment ceiling, controlled by door activation switch. Switch properly adjusted to turn light off when door is closed and latched.

## LED STRIP COMPARTMENT LIGHTING

Two (2) On Scene Solutions LED compartment strip lights installed on side walls of each side compartment. Each light to be 24" in length and will mount vertically between Kindorf tracks to provide total illumination regardless of shelf or tray position. Rear facing compartment (if equipped) to have Two (2) 4" round LED lights recessed in the ceiling. Lights to be wired to individual door switches.

## LED STRIP GROUND LIGHTING

On Scene Solutions LED strip lights installed on the underside of the fiberglass body, under the rear bumper and the chassis cab steps for ground illumination. Ground lights interfaced with ignition switch and transmission neutral safety switch. Lights will activate when ignition switch is on and unit transmission is placed in park/neutral.

## 12V OUTLET

One (1) or more 12-VOLT accessory outlet installed in customer specified compartment or cab location.

**TOTAL QUANTITY:** \_\_\_\_\_ **LOCATIONS:** L1 \_\_\_\_\_ L2 \_\_\_\_\_ L3 \_\_\_\_\_ R1 \_\_\_\_\_ R2 \_\_\_\_\_ R3 \_\_\_\_\_ CAB \_\_\_\_\_

## **12-VOLT CHASSIS SUPPORTED BODY HEATING/COOLING SYSTEM**

One (1) Danhard, Inc air conditioning (16,000BTU) and heating (24,000BTU) unit installed in top forward section of body. Body to have removable panel mounted on roof for easy access/repairs. Air channeled to each body side compartment through a fiberglass plenum installed above the compartments. Duct louver installed in compartment for supply air, return louver installed in lower rear side of compartment to recycle heated/cooled air. Unit connected to chassis heating and cooling system with required hoses, connections, relays and cab mounted controls. Hoses routed to body from engine to be shielded with loom. Regulating valve installed in cab heater supply hose to regulate flow to cab and body.

**\*System is not available on Dodge Ram Chassis.**

## **SCENE LIGHTS - Halogen**

Six (6) Whelen 700 Series (70K000ZR) Opti-Scene halogen lights installed in upper body corner rail and wired to switch on cab console/panel. Two (2) each installed on left side, right side and rear of unit. Rear scene lights to be interfaced with chassis back-up lights.

## **SCENE LIGHTS – 700 SERIES LED**

Six (6) Whelen 700 Series (70C0ELZR) Super LED Scene lights installed in upper body corner rail and wired to switch on cab console/panel. Two (2) each installed on left side, right side and rear of unit. Rear scene lights to be interfaced with chassis back-up lights.

## **SCENE LIGHTS – M7 LED**

Six (6) Whelen M7 (M7ZC) LED Scene lights installed in upper body corner rail and wired to switch on cab console/panel. Two (2) each installed on left side, right side and rear of unit. Rear scene lights to be interfaced with chassis back-up lights.

## **COMPARTMENT DOOR “OPEN” INDICATOR**

Indicator light installed in cab headliner near the windshield to indicate one or more of the compartment doors are unlatched. All body compartment doors to be wired to indicator light. Light to be a Whelen T0A00FCR with a chrome flange.

## **BACK-UP ALARM**

One (1) Ecco 510 back-up alarm installed on rear of chassis and wired to chassis reverse circuitry.

## **WHELEN LED BRAKE/TAIL/TURN UPGRADE**

Whelen M6 LED brake/tail, Whelen M6 LED populated arrow turn indicator, and a Whelen M6 LED back up light installed in a Whelen cast aluminum housing. The center high mount light will be a Whelen M6 LED brake/tail light in a chrome flange. **\*This package to replace the standard lights in the DOT section.**

## **FIRE RESEARCH LED PUSH-UP POLE LIGHTS**

Two (2) Fire Research Spectra LED Scene Light model SPA530-Q15 side mount push up telescopic light shall be installed. The light pole shall be anodized aluminum and have a knurled twist lock mechanism to secure the extension pole in position. The extension pole shall rotate 360 degrees. The outer pole shall be a grooved aluminum extrusion and

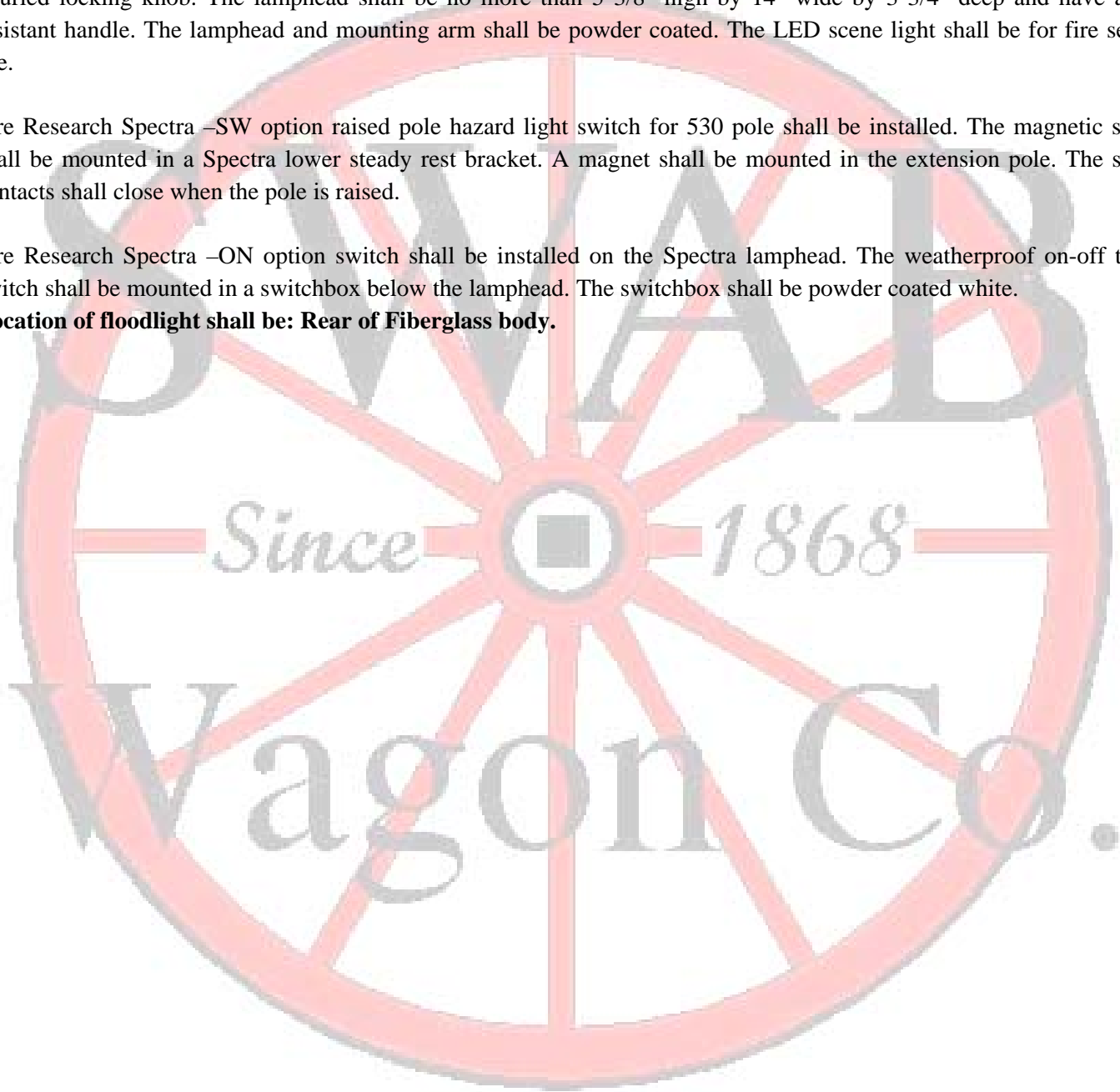
qualify as an NFPA compliant handrail. The pole mounting brackets shall have a 2 3/4" offset. Wiring shall extend from the pole bottom with a 4' retractile cord.

The lamphead shall have sixty (60) ultra-bright white LEDs, 48 for flood lighting and 12 to provide a spot light beam pattern. It shall operate at 12/24 volts DC, draw 13/6.5 amps, and generate 15,000 lumens of light. The lamphead shall have a unique lens that directs flood lighting onto the work area and focuses the spot light beam into the distance. The lamphead angle of elevation shall be adjustable at a pivot in the mounting arm and the position locked with a round knurled locking knob. The lamphead shall be no more than 5 3/8" high by 14" wide by 3 3/4" deep and have a heat resistant handle. The lamphead and mounting arm shall be powder coated. The LED scene light shall be for fire service use.

Fire Research Spectra –SW option raised pole hazard light switch for 530 pole shall be installed. The magnetic switch shall be mounted in a Spectra lower steady rest bracket. A magnet shall be mounted in the extension pole. The switch contacts shall close when the pole is raised.

Fire Research Spectra –ON option switch shall be installed on the Spectra lamphead. The weatherproof on-off toggle switch shall be mounted in a switchbox below the lamphead. The switchbox shall be powder coated white.

**Location of floodlight shall be: Rear of Fiberglass body.**





# 110VAC ELECTRICAL EQUIPMENT

## MANUAL SHORELINE

One (1) 20 amp motor-base shoreline receptacle installed with Kussmaul weatherproof cover at panel between compartment L-1 and L-2. Wired to one (1) 20 amp duplex receptacle for optional 110-volt electrical items specified by customer.

Twist lock **or** push/pull style plug available.

FACEPLATE COLOR: \_\_\_\_\_

## AUTO-EJECT SHORELINE

One (1) Kussmaul 20 amp auto-eject shoreline receptacle installed with Kussmaul weatherproof cover at panel between compartment L-1 and L-2. Wired to one (1) 20 amp duplex receptacle for optional 110-volt electrical items specified by customer.

One (1) matching female plug supplied for installation by customer's electrician at customer's facilities.

FACEPLATE COLOR: \_\_\_\_\_



## 110V HEATING/COOLING UNIT – ROOFMOUNT

Duo-Therm roof top air conditioner (11,000 BTU) with heat strip (5,600 BTU) installed and secured to body roof. Air to be distributed to the side compartments thru the fiberglass plenum installed above the compartment ceilings. Directional louver cut into compartment ceiling will allow flow of incoming air. Return louver installed in lower rear side of compartment to recycle heated/cooled air. Thermostat installed in customer specified side compartment and wired to Duo-Therm unit. Dedicated 20-amp shoreline for heat/cool unit installed in panel between compartments L-1 and L-2 and wired directly to Duo-Therm unit.



THERMOSTAT LOCATION: L1 L2 L3 R1 R2 R3

## 110V HEATING ONLY UNIT

### \*SHORELINE REQUIRED

110-volt heater installed in roof cavity and attached to fiberglass plenum and controlled by a bi-metal thermostat unit mounted in one of the main heated compartments. Inlet vents to be installed in the ceiling with the capability of being completely shut. Return vents installed in lower rear side of compartment(s).

Heat may be used in all six (6) compartments, but for the most efficient operation at least two (2) compartments should be closed off.

**THERMOSTAT LOCATION: L1 L2 L3 R1 R2 R3**



### **BATTERY CONDITIONER – 15 AMP**

**\*SHORELINE REQUIRED**

One (1) Kussmaul Auto Charge 1000 (#091-56-12) Automatic Battery Charger and Power Supply installed and wired to battery system and 110-volt circuit. One (1) 110VAC duplex receptacle installed at conditioner location. Location of conditioner to be determined by customer.

Waterproof bar graph display to be mounted in the panel between compartments L-1 and L-2.

### **BATTERY CONDITIONER – 20 AMP**

**\*SHORELINE REQUIRED**

One (1) Kussmaul 20 LPC (#091-207-12), 20-amp, fully automatic battery charger/conditioner installed in customer specified location. Battery Deluxe Indicator display installed on cab center console, unless otherwise indicated. One (1) 110VAC duplex receptacle installed at conditioner location. Conditioner wired to batteries as required. Location of conditioner to be determined by customer.



### **BATTERY CONDITIONER – 40 AMP**

**\*SHORELINE REQUIRED**

One (1) Kussmaul 40 LPC (#091-200-12), 40-amp, high-output fully automatic battery charger/conditioner installed in customer specified location. Battery Deluxe Indicator display installed on cab center console. One (1) 110VAC duplex receptacle installed at conditioner location. Conditioner wired to batteries as required. Location of conditioner to be determined by customer.

### **110VAC OUTLET**

**\*SHORELINE REQUIRED**

One (1) or more 20amp duplex receptacle for 110V electrical items installed in customer specified compartments or chassis cab locations.

**TOTAL QUANTITY: \_\_\_\_\_ LOCATIONS: L1 \_\_\_\_\_ L2 \_\_\_\_\_ L3 \_\_\_\_\_ R1 \_\_\_\_\_ R2 \_\_\_\_\_ R3 \_\_\_\_\_ CAB \_\_\_\_\_**

# WARNING LIGHTS AND SIRENS

## HEADLIGHT WIG-WAG FLASHER

One (1) Whelen UHF-2150A headlight flasher installed and wired to chassis headlights and a switch on cab center console. Headlight flasher system is to be wired so that it is disabled when the chassis is placed into park.

## HIDE-A-WAY SYSTEM

Whelen Vertex self-contained LED hide-a-way flashers installed in the chassis headlight housings and wired to a switch on the cab center console. If system is supplied with white lights, flasher will be wired to become disabled when the chassis is placed into park.

**CHOOSE LED COLORS:**     **DRIVER =**                     **RED BLUE WHITE**  
   **PASSENGER =**                     **RED BLUE WHITE**

## WHELEN FREEDOM SERIES LED LIGHT BAR

One (1) Whelen Edge Freedom series LED bar light installed on forward cab roof. Bar light controlled by switches installed on cab center console. Bar light configured as follows:

- Model FX2RRRR, 55" in length
- Four (4) corner red LED's
- Four (4) front facing linear red LED's
- Two (2) model FXTLS1D LR11 Super-LED flashing take-down lights
- Two (2) model FXALF1D LR11 Super-LED flashing alley lights
- Permanent mount kit.

## WHELEN LIBERTY SERIES LED LIGHT BAR

One (1) Whelen LFL Liberty LED light bar installed per manufacturer's installation instructions on cab roof and wired to switch(s) on cab console/panel. Light bar to be configured as follows:

- Model SX2RRRR, 54" with 4 corner linear LED
- SLDRR – 500 Series Linear LED Flashers
- SPALF1 – Two LR11 Super LED Flashing Alley Lights
- SXTLS1MR – Two LR11 Super LED Flashing Takedown Lights W/ one Linear LED
- Permanent mount kit

## “BUILD-A-BAR” FRONT LIGHT BAR

One (1) 55" +/- light bar of the customers choice installed onto chassis roof and wired to switch(s) on cab center console.

**BRAND:** \_\_\_\_\_

**MODEL:** \_\_\_\_\_

**LED COLORS:** \_\_\_\_\_

**LENSE COLOR:** \_\_\_\_\_

**SPECIAL OPTIONS:** \_\_\_\_\_

## WHELEN MINI FREEDOM REAR LIGHT BAR(S)

Whelen Freedom mini light bar(s) installed on the rear roof of the fiberglass body. Light bars to be wired to a switch on the cab center console.

Quantity: \_\_\_\_\_

## WHELEN MINI LIBERTY REAR LIGHT BAR(S)

Whelen Liberty mini light bar(s) installed on the rear roof of the fiberglass body. Light bars to be wired to a switch on the cab center console.

Quantity: \_\_\_\_\_

## REAR LIGHT BAR(S)

One (1) 55" +/- light bar, or one (1) or two (2) mini light bars installed onto rear fiberglass body roof and wired to switch(s) on cab center console. Light bar(s) to be customer specified and installed per manufacturer's installation instructions.

QUANTITY: \_\_\_\_\_

BRAND: \_\_\_\_\_

MODEL: \_\_\_\_\_

LED COLORS: \_\_\_\_\_

LENSE COLOR: \_\_\_\_\_

SPECIAL OPTIONS: \_\_\_\_\_

## WHELEN SIREN AND SPEAKERS

One (1) Whelen 295SLSC1 electronic siren with microphone installed per manufacturer's installation instructions in cab console/panel.

Two (2) Whelen SA315P 100 watt speakers installed per manufacturer's installation instructions and wired to above electronic siren on cab console/panel.



## WHELEN HOWLER SIREN AND SPEAKER ADD-ON

One (1) Whelen Howler low frequency tone siren and speaker system installed per manufacturer's installation instructions. The Howler system can be added onto any 100-200 watt siren.

## FEDERAL SIREN AND SPEAKERS

One (1) Federal PA300 200 watt siren with microphone (#690010) installed per manufacturer's installation instructions in cab console/panel.

Two (2) Federal DynaMax/ES100 100 watt speakers installed per manufacturer's installation instructions and wired to above electronic siren on cab console/panel.



## SIREN SPEAKERS

Two (2) Cast Products “through-the-bumper” siren speakers installed per manufacturer’s installation instructions and wired to electronic siren. Speakers to replace the models listed with sirens.

## FEDERAL ELECTRONIC “Q” SIREN

One (1) Federal electronic Q-siren (E-Q2B) installed per manufacturer's installation instructions in cab console/panel.

One (1) Federal BP200-Q 200 watt speaker with chrome Q-Siren grille installed per manufacturer's installation instructions and wired to above electronic siren on cab console/panel.



## AIR HORNS

Two (2) Buell Strombos air horns, one 10” and one 12” installed in customer specified location per manufacturer's installation instructions, connected to one (1) Gast compressor, Model 3HBB-19-M322, and one (1) 6" x 25" Buell storage tank mounted on chassis. Air Horn activation method is to be determined prior to installation, standard option will be a momentary switch that is installed onto the cab center console.

## LOAD MANAGER / LIGHT SEQUENCER

One (1) Kussmaul Model 091-32 load manager installed and wired to customer specified warning devices, 5 maximum. Load manager has low voltage monitoring capabilities to prevent electrical overloads. Load manager will automatically sequence lights on and off. Load manager includes console/panel mounted indicator to signal which mode unit is in and also, a remote manual override switch.

## WARNING LIGHT PACKAGE – CREATE YOUR OWN

Get a quote on the warning light package of your choice by submitting a list of the lights you would like to use. We are an OEM supplier for Whelen, Code 3, Federal, Weldon, Power Arc and others. Please include the following in your list: Location, Quantity, Brand, Model, LED Color, Lens Color and any special instructions (example: specific flash pattern, light syncing or mounting option).

## WHELEN LED WARNING LIGHT PACKAGE – STANDARD

Standard LED light package consisting of the following:

- Grill Lights:** Two (2) Whelen LINZ6 RED Warning Lights installed in between the slates of the front grill, or onto an optional front Brush Guard using Whelen Pedestal Mount Brackets.
- Intersection Lights:** Two (2) Whelen LINZ6 RED Warning Lights installed on the front fenders.
- Body Lights:** Six (6) Whelen 700 Series Super LED RED Warning Lights installed in the upper roof rail section of the fiberglass body, two (2) per side and rear.

Above warning lights to be installed using Whelen Chrome Flanges. Lights will be wired to switches on the cab center console. Lights will be installed using Whelen’s default flash pattern, any special programming or additional sync wiring may be subject to additional labor costs.

## WHELEN LED WARNING LIGHT PACKAGE – DELUXE

Deluxe LED light package consisting of the following:

- Grill Lights:** Four (4) Whelen LINZ6 Warning Lights, two (2) **RED** and two (2) **WHITE**, installed in between the slates of the front grill, or onto an optional front Brush Guard using Whelen Pedestal Mount Brackets. Lights to be synced together into an “X” pattern. White lights will be wired to be disabled when the chassis is placed into park.
- Intersection Lights:** Two (2) Whelen LINZ6 Warning Lights. Lights will have a split **RED/WHITE** color and will be installed on the chassis front fenders.
- Body Lights:** Twelve (12) Whelen M7 Series warning lights. There will be ten (10) **RED** and two (2) **AMBER** warning lights installed. Two (2) **RED** lights per side and rear installed in the upper roof rail, one (1) **RED** light below compartments L1, L3, R1 and R3. The two (2) **AMBER** lights to be installed below the drip rail on the rear of the body, or below the scene lights (if equipped).

Above warning lights to be installed using Whelen Chrome Flanges. Lights will be wired to switches on the cab center console. Lights will be programmed to customer selected flash pattern (if desired), and will be synchronized using the wiring provided by Whelen. Lights will flash in a wig-wag “X” pattern unless otherwise instructed.

### TRAFFIC ADVISOR #1

One (1) Whelen Model TAL65 5MM LED traffic advisor, 36” in length, installed on rear roof rail. One (1) Whelen Model TACTLD1 control head installed in cab center console and wired to traffic advisor.

### TRAFFIC ADVISOR #2

One (1) Whelen Model TAZ86 LINZ6 LED traffic advisor, 30.5” in length, installed on rear roof rail. One (1) Whelen Model TACTLD1 control head installed in cab center console and wired to traffic advisor.

### TRAFFIC ADVISOR #3

One (1) Whelen Model TADF6 500 Series Linear LED DUO traffic advisor, 37” in length, installed on rear roof rail. DUO technology has the ability to flash different colors in the same lightbar, changing from Traffic Advisor to warning signals. One (1) wireless remote controller included to allow for changing of patterns on the fly.

# PAINTING, LETTERING & STRIPING

*The Pioneer fiberglass body will have a gel coat color of Oxford White to match the Ford Chassis molded into the body during fabrication. This color is a shade of white that will not match GM Summit White. For those wanting the body to match the chassis color please choose a painting package below. Pioneer body painting does not include inside of the doors or compartments unless specifically requested.*

## **PIONEER BODY PAINTING**

**Disassembly** – All bolt on body exterior hardware, trim panels and moldings removed prior to painting preparation, to include compartment doors.

**Preparation** – All exterior body surfaces thoroughly sanded with dual action air disc type sander using #180 grit sandpaper followed by #320 grit sandpaper prior to prime painting.

**Prime Painting** – All specified area prime-painted with PPG #F3950 non-sanding primer/sealer. Prior to finish painting, two (2) additional coats of color paint shall be applied and then the entire painted surface to be finish sanded with #400 grit sand paper.

**Finish Painting** – All exterior body surfaces finish painted with two (2) wet-on-wet coats of PPG Delfleet “Evolution” base coat and two (2) wet-on-wet coats #F3925 clear.

Finish paint to be applied using individual one (1) quart siphon feed air spray guns set at 50-60 PSI regulated pressure.

Finish painting to be performed in twelve thousand (12,000) CFM down draft paint booth having 12,000 CFM Trane air replacement/heat unit and two (2) six thousand (6,000) CFM under floor exhaust fans to maintain atmospheric pressure during painting operation, while exchanging booth air one (1) time per minute.

**Specified Painting: (Pioneer body and roof can be painted one solid color to match or accent the chassis, or can have a two-tone design where the body is painted a primary color and the roof is painted an accent color. Any other design ideas need to be submitted for a custom quote)**

Body Exterior – Single Color – match Factory Color

**REASSEMBLY** – All removed body hardware, trim panels and moldings to include compartment doors to be reinstalled using specified hardware fasteners.

## **STANDARDIZED NFPA STYLE STRIPING PACKAGE**

The Pioneer Body does not officially fall under any category regulated by the NFPA 1901 standards, but if it were this package is what would be required in order to be compliant for reflective surfaces.

**Front and Side Stripe:**

A side stripe or combination of stripes shall be a minimum of 4" in total width. This stripe needs to be affixed to at least 50% of the cab and body length and 25% of the width of the front of the apparatus.

**Rear Chevron:**

The rear facing vertical surface shall be equipped with retroreflective striping in a chevron pattern sloping downward and away from the centerline of the vehicle at an angle of 45 degrees. Each stripe in the chevron shall be a single color alternating between **RED** and **YELLOW**. Each stripe will be 6" in width.

**Conspicuity Tape:**

All chassis and body compartment doors will have 2" wide RED/WHITE reflective conspicuity tape applied to the lower interior edges. The outward ends of all slide out trays that protrude beyond the body of the apparatus shall have conspicuity tape applied.

**CUSTOM LETTERING AND/OR STRIPING PACKAGES**

Customer to supply detailed drawings or photos of desired graphics package. Unless otherwise requested the standard material used will be Avery A7 Reflective Vinyl. Other materials, as well as painted stripes are also available.

